

Narrow Linewidth Erbium-Doped Fiber DFB Seed Laser

Precilasers' narrow-linewidth Erbium-doped fiber DFB laser is realized by writing fiber gratings on erbium-doped optical fibers. It can cover any wavelength between 1525-1610nm with a linewidth of 1kHz/2kHz.

Features

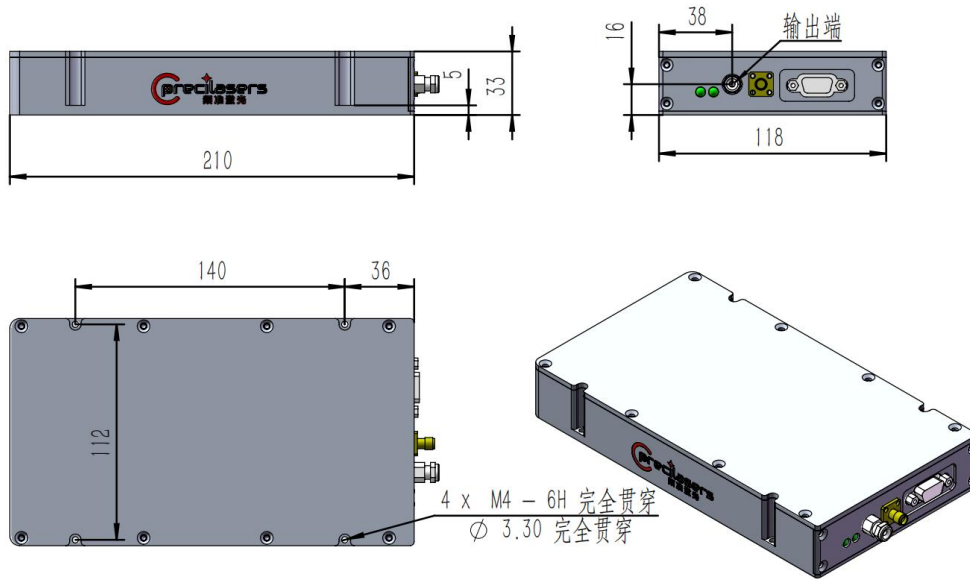
- Narrow Line Width
- Tunable
- Never Mode-hop
- Linear Polarization
- Continuous Laser

Application

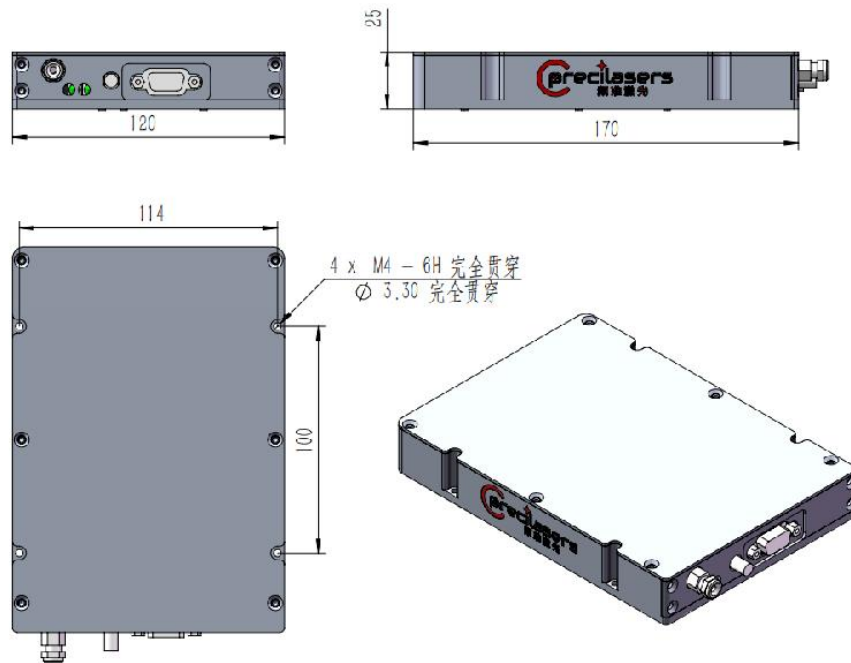
- Quantum Computing
- Quantum Precision Measurement
- Sensing



❖ Product Dimensions

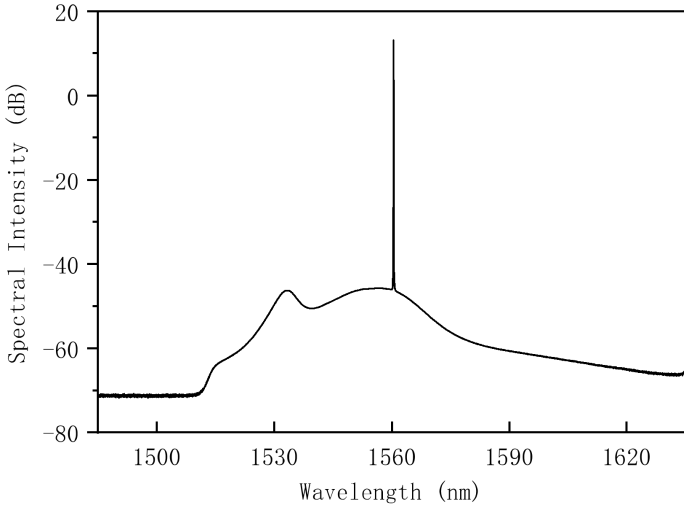


Standard product dimensions (default dimensions)

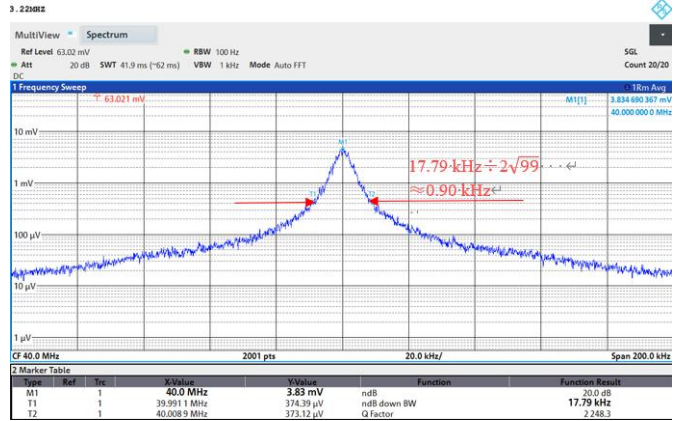


Small product dimensions

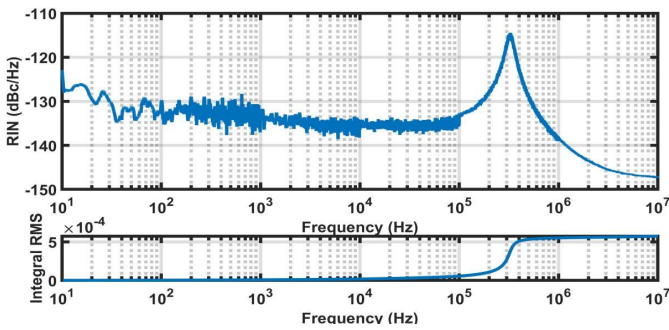
❖ Performance index test (typical value)



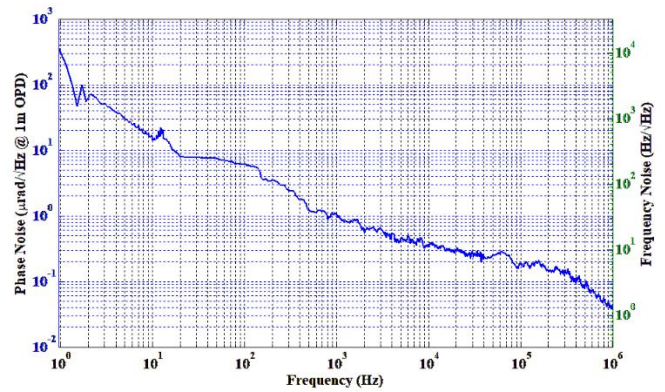
Output spectrum: Signal-to-Noise Ratio 58.75dB



Line width test chart: 0.90kHz



Relative intensity noise test (RIN) :0.06% [10Hz-10MHz]




Phase noise, frequency noise test chart



Shanghai Precilasers Technology Co., Ltd.
 📍 Floor 2, Building 2, No. 1918, Xupan Road,
 Jiading District, Shanghai
 📞 021-59160265

info@precilasers.com | www.precilasers.com



⚠ Laser Hazard

Visible or invisible laser radiation, avoid eye or skin exposure to direct, reflected or filtered radiation.

CLASS 4 Laser Products